

# CamRanger<sup>→</sup>

## Mac User's Manual

Supports Mac OS 10.7/Lion and 10.8/Mountain Lion



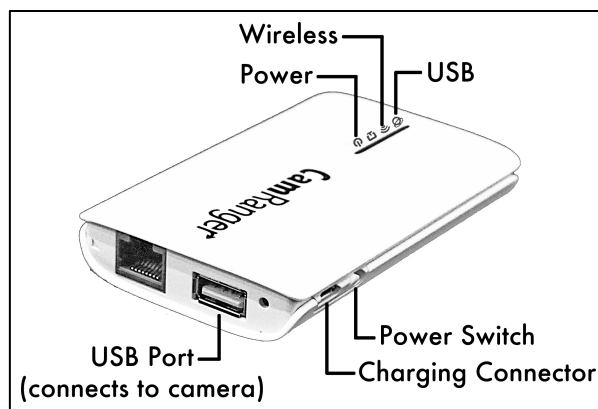
## Table of Contents

<b>CamRanger Hardware .....</b>	<b>3</b>
<b>CamRanger Registration.....</b>	<b>4</b>
<b>CamRanger Setup .....</b>	<b>5</b>
<b>CamRanger Mac Application .....</b>	<b>6</b>
<b>Status Bar .....</b>	<b>6</b>
<b>Recent Thumbnails .....</b>	<b>7</b>
<b>Main Image View .....</b>	<b>8</b>
Live View Images.....	8
Captured Images.....	8
<b>Advanced Tabs.....</b>	<b>9</b>
Data .....	9
Focus.....	9
Timer .....	10
HDR .....	11
<b>Camera Properties .....</b>	<b>12</b>
Exposure Compensation & Bracketing .....	12
<b>Camera Actions.....</b>	<b>13</b>
Capture .....	13
Auto / Manual Focus Toggle.....	13
Live View.....	14
Movie Mode .....	14
<b>Mac CamRanger Menu Bar .....</b>	<b>14</b>
<b>CamRanger: Preferences.....</b>	<b>15</b>
Saving .....	15
Viewing.....	15
Controls .....	16
<b>File: Saving Options.....</b>	<b>16</b>
<b>Connection .....</b>	<b>16</b>
<b>View .....</b>	<b>17</b>
Card Contents .....	17
Controls .....	18
Image Only .....	18
<b>Window .....</b>	<b>18</b>
<b>Help .....</b>	<b>18</b>
<b>Incorporation with Lightroom or Aperture .....</b>	<b>19</b>
<b>Tips &amp; Troubleshooting .....</b>	<b>19</b>
<b>Registration .....</b>	<b>19</b>
<b>Connection .....</b>	<b>19</b>
<b>Speed.....</b>	<b>20</b>
<b>Commands.....</b>	<b>20</b>
<b>Images .....</b>	<b>20</b>

## CamRanger Hardware

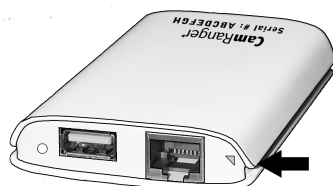
The CamRanger device is turned on by sliding the power switch, located on the side of the unit, towards the front of the device. The green power light will illuminate when the unit is powered on. Any additional switch present on the CamRanger currently serves no function.

The charging port is located next to the power switch. The male micro B end of the provided white charging cord is connected to this port. The other end of the charging cord can be connected to a female USB port that provides power, such as a computer or through an AC adapter.

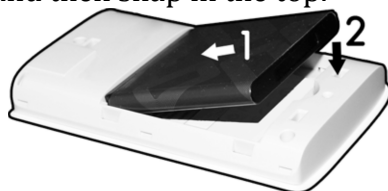


When the device is charging, a yellow/orange light will illuminate indicating that it is charging. The yellow/orange light will turn off leaving only a green power light when it is fully charged. Charging takes approximately 2 hours.

The CamRanger battery is accessible by removing the bottom cover. The bottom cover is the side with the CamRanger serial number. Simply grasp the side edge/corner of the cover



near the USB connector and pull back to remove. To replace the cover, first place the two lower tabs into the slots and then snap in the top.



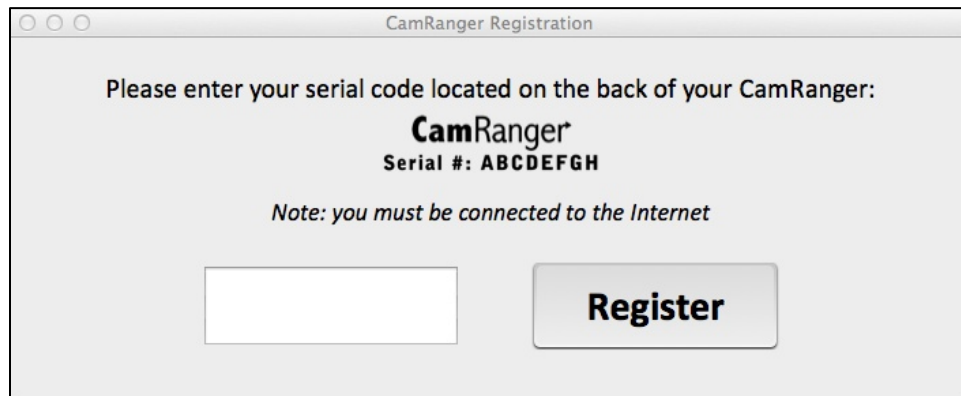
CamRanger is not water-resistant in any way and should not get wet.

A black neoprene case is provided to assist in attaching and securing the CamRanger, note that this pouch is not waterproof. The case has a carabineer to facilitate hanging from a tripod, belt loop, etc. Do not just hang the CamRanger by the cable as it will put strain on the USB connectors as well as possibly disconnect.

# CamRanger Registration

Before a Mac can be used with a CamRanger, the application should be loaded on the Mac, at no additional cost to the user, from the Apple Mac app store or from the downloads page on the CamRanger website, <http://www.camranger.com/downloads>. Once downloaded, the CamRanger application needs to be registered. Registration requires Internet connectivity. Before proceeding, confirm Internet connectivity (do not connect to the CamRanger network).

Launch the CamRanger application and the following screen appears. If the registration pop-up does not appear, from the “Help” tab on the Mac CamRanger menu bar, click “Register,” and the following screen will appear.



Enter the 8-character CamRanger serial number. The serial number is located both on the bottom of the back cover as well as above the battery underneath the back cover. Note: the serial number contains only letters and NO numbers.

Press the “Register” button to register. A message box will appear indicating registration was successful and the Mac can be used with the CamRanger. Exit the application and then proceed with the setup process as detailed below in the CamRanger Setup section.

If registration fails, confirm Internet connectivity and the CamRanger serial number before contacting [support@CamRanger.com](mailto:support@CamRanger.com) for assistance.

## CamRanger Setup

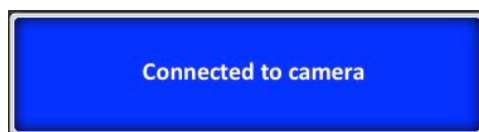
Power on the CamRanger and confirm all four lights briefly appear. The CamRanger will take approximately 30 seconds until it is fully initialized.

The first time the user connects to the CamRanger from a Mac, the Mac needs to be registered. See the CamRanger Registration section above.

Once registered, connect to the CamRanger network on the Mac. The network name will be CamRanger-###, with the last three characters matching the last 3 characters of the CamRanger's serial number. Enter the network password, which is the full 8 characters of the CamRanger's serial number. The password **MUST BE ENTERED IN ALL CAPS**.

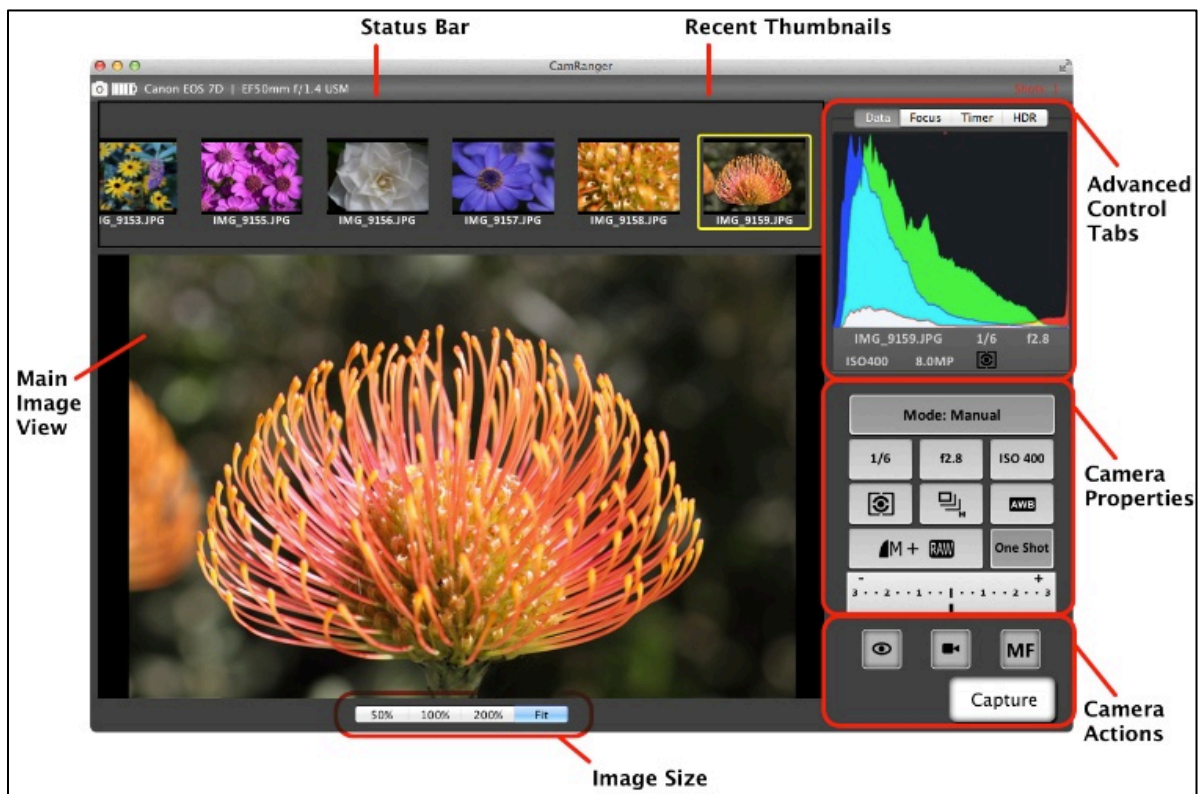
Connect the CamRanger to the camera with the provided black USB cable. (Note: units purchased through retailers will have a USB mini cable, which will work with most cameras. A few select Nikons use a different cable, which may be purchased separately or the cable that came with the camera will also work.) The male A end is inserted into the USB port at the end of the CamRanger, and the other end is connected to the USB port of the camera. Then ensure the camera is turned on. When the camera is connected and turned on, the green light closest to the edge of the CamRanger device will light.

Launch the CamRanger Mac application. The application will connect to the CamRanger and the user will be able to control the camera. To attempt to manually initiate a connection, on the Mac CamRanger menu bar, click "Connection" and then "Connect." Once connected, the following screen will appear.

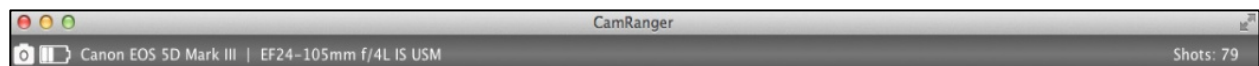


For common problems with setup and connection refer to the Troubleshooting section at the end of the manual.

# CamRanger Mac Application



## Status Bar

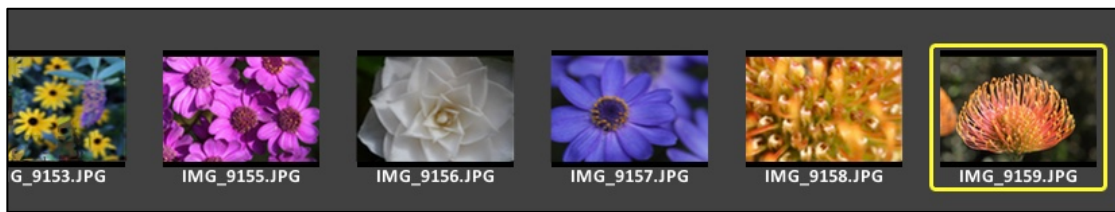


The status bar is located at the top of the application screen and provides the user with a number of elements.

- From left to right:
  - Camera Connection: Indicates if the CamRanger device is currently communicating with the camera
    - Connected:
    - Disconnected:
  - Camera Battery Status: Indicates the approximate battery charge on the camera
  - Camera Model Name
  - Lens Model Name (Note: not all cameras or lenses are supported)
  - Shots Remaining: Indicates the number of shots currently remaining on the camera's removable media using the current settings
- Quitting, maximizing, and minimizing a window
  - Red, Yellow, and Green circle on upper left corner:

- Red: This serves no purpose and does not actually close the window. To close the window, select “CamRanger” on the Mac CamRanger menu bar and then “Quit CamRanger” or use the  $\text{⌘}+Q$  shortcut.
- Yellow: Used to minimize the window
- Green: Used to maximize the window
- Click on the extending arrows, located on the upper right corner of the screen, to view the window in full screen

## Recent Thumbnails



- As images are captured, the thumbnails are automatically downloaded and displayed along the top of the screen. The thumbnails may be scrolled left and right when more are downloaded than can fit.
- A thumbnail may be selected to view the corresponding image. The image is then displayed in the main image view. The currently selected thumbnail is indicated with a yellow outline.
- When both a JPG and RAW file format is captured, only the JPG thumbnail is displayed.
- For Canon, JPG and RAW files can be viewed. For Nikon, JPG, TIFF and RAW can be viewed.
- A small red “R” icon on the upper right of the thumbnail indicates that it is a RAW image. A small green “T” indicates TIFF, while no icon is used to indicate JPG formatted images.
- Note: only thumbnails for images captured within the current CamRanger session will be displayed.



## Main Image View

Live view and captured images are displayed within the main image view.

### *Live View Images*

To initiate live view, click on the eyeball symbol located within the camera action controls on the bottom right of the application screen. In live view, the image on the screen is automatically updated as live view images stream in. The exact frame per second rate is very much dependent on CamRanger WiFi signal strength, the camera, and the Mac specs. However, assuming a good connection, live view frame rate will be about 7 – 18 fps.

When in live view, the main image view may be clicked once to focus at that point. Note that for Canon cameras, the outer edges of the image cannot be focused on. Double clicking will zoom in the viewing window and double clicking again returns to regular size.

A live view histogram may be toggled on or off from the “Data” tab as described in the *Advanced Tab- Data section found on page 9*. Toggling the histogram on will generate a histogram for each live view frame; however, at the cost of a decreased frame rate. Toggle the histogram off to maximize the frame rate.

Canon cameras can display the live view image on the camera and Mac and allow the user to trigger images with the camera by activating the camera’s live view button *after* starting live view within the CamRanger application. Nikon cameras do not allow any control of the physical camera while live view is active within the CamRanger application.

### *Captured Images*

Captured images will be displayed in the main image view in one of two ways, by selecting a thumbnail in the thumbnails section of the application or through the Auto-View Images feature. The Auto-View Image feature is useful when capturing images from the camera and using the Mac application for image display. When this feature is selected, pictures will automatically display in the main image view screen. This feature can be turned on or off by selecting “CamRanger” on the Mac CamRanger menu bar and then “CamRanger Preferences.” For more information about this feature, refer to the *Mac CamRanger Menu Bar- Preferences section found on page 15*.

When a thumbnail is selected for viewing, the image will be displayed on the main image view and can be zoomed in at 50%, 100%, 200%, or fit to screen by selecting the magnification of interest below the image. The image can then be panned using the mouse.

Images displayed in the main view are NOT saved by default, but are instead just temporarily cached. Individual images can be saved by selecting “File” from the Mac CamRanger menu bar and then “Save” or “Save As”. For further saving options including the ability to automatically save all pictures, refer to the *Mac CamRanger Menu Bar- Preferences section found on page 15*.



To view the images on the camera's memory card select "View" on the Mac CamRanger menu bar and then "Card Contents." A new window will appear displaying thumbnails of the images on the camera's removable media. Double-clicking a thumbnail will display the image within the main image view. Additional features for downloading or deleting images are also available. For further information about the card contents, refer to the *Mac CamRanger Menu Bar- Card Contents* section found on page 17.

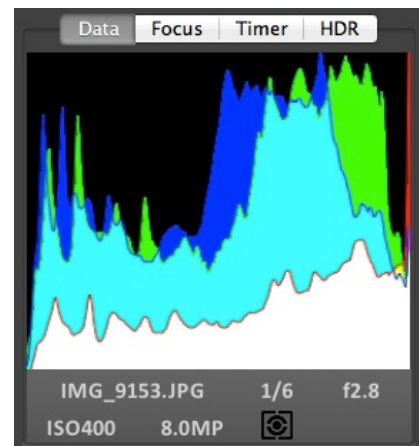
## Advanced Tabs

There are four tabs providing advanced information or controls: Data, Focus, Timer, and HDR.

### Data

The data tab shows an RGB histogram and meta-data associated with the image in the main image view. The following meta-data is provided:

- Shutter Speed
- Aperture
- MegaPixels (Note this is not file size, but image resolution)
- ISO
- Metering Mode
- Exposure Compensation Value



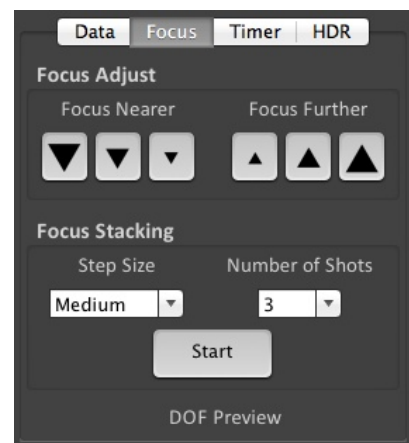
Within live view the data tab will simply inform the user that live view is on and provide a toggle switch to toggle the display of the histogram. The histogram is updated in real-time, but at the cost of slowing down the frame rate.

### Focus

The focus tab is only enabled during live view and provides advanced focusing controls.

#### Focus Adjust

There are two sets of buttons to move the lens' focal plane nearer or further from the camera. Each set has three buttons with different sized arrows to specify a large, medium, or small step in focus. Tap the button to move the focus by a single increment, holding down the button will have no affect.



### Focus Stacking

Focus stacking is a process of taking multiple captures with slight changes in focus and then post processing them to enhance the depth of field. This control allows the user to set the focus step size to take between in each shot and the number of shots to take. Each focus step will move the focal plane further from the camera. So the user will want to set the focus to the nearest plane desired to be in focus and start the stacking process from there. If too few captures were taken, the process can be restarted from where the initial stacking ended. Note: post processing of the images is not done within the CamRanger application.

### DOF Preview

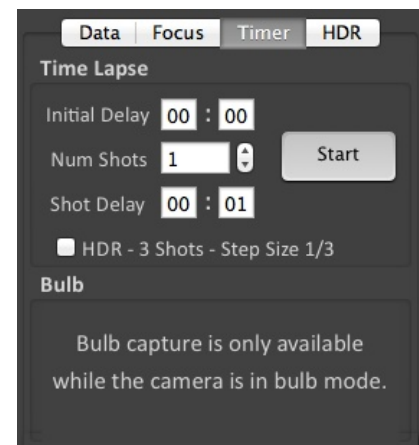
While in live view the Depth of Field can be previewed by selecting the “DOF Preview” located within the Focus tab. This function can only be activated in live view.

## Timer

The timer tab allows the use of the CamRanger as an intervalometer as well as specifying exposure times when the camera is in bulb mode.

### Time Lapse

- The entry fields are used to specify the initial delay before the first shot, the number of shots to take, and the delay in between each shot.
- After configuring the settings, click the “Start” button to begin the intervalometer process.
- The intervalometer commands are stored on the CamRanger device, the Mac does not need to remain on or connected once the intervalometer command is initiated.
- The “Shot Delay” should not be used for precision timing, particularly when the delay is only a few seconds or less.
- Once an intervalometer sequence is begun, it can only be cancelled by turning off power to the CamRanger device.
- Time Lapse – HDR
  - If the camera is in manual exposure mode, a small HDR check box will appear allowing the combination of a time lapse and HDR sequence.
  - If the HDR check box is set to on, for each time lapse capture, CamRanger will actually take a sequence of bracketing images using the bracket parameters as specified within the HDR tab.



- Time Lapse – Bulb
  - If the camera is in bulb mode/shutter speed and the camera supports bulb shots, CamRanger will take Bulb shots during the time lapse. The bulb duration is specified by the Shot Duration, located within the Bulb section immediately below the Time Lapse section.
- Before starting the time lapse sequence, a dialog will appear informing the user of the time lapse parameters and provide an opportunity to cancel.

### Bulb

- The Bulb controls are only enabled when the camera is in bulb mode and the camera supports remote bulb shots.
- The entry fields are used to specify the initial delay before the first shot and the length of the exposure.
- After configuration, click the “Start” button to begin the bulb process.
- The bulb commands are stored on the CamRanger device and the Mac does not need to remain on or connected.

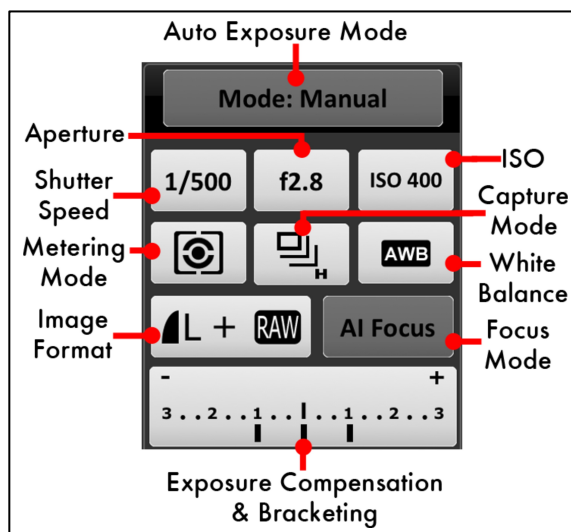
### HDR

The “HDR”, or Advanced Bracketing, tab can be used to generate a series of photos with varying exposures.

- Advanced Bracketing is only enabled when the camera is in Manual mode.
- The Property field specifies the camera property to be varied. There are three options, Shutter Speed, Aperture, and ISO.
- The Initial Delay field specifies the amount of delay, if any, to take before beginning the bracketing sequence.
- The initial value for the selected property is set with the Start Value field.
- The total number of images to capture is specified by the Number of Shots field.
- The possible Step Size values are up to 3 stops and specify how many stops to vary the exposure between each capture.
- The valid values for the Number of Shots are automatically determined based on the values specified for Start Value and Step Size. For example a step size of 1/3 stops will allow more shots than a step size of 3 stops.
- The starting point of the bracket is set within the settings and can begin at the shadows (lowest exposure), mid-point, or highlights (highest exposure). If the starting point is set to mid-point, the resulting sequence will start at the lowest exposure but with the initially set value as the mid-point. See the Advanced Settings section for more information on setting the HDR start point.
- After configuration, press the “Start” button to begin the bracketing process.
- HDR sequences may be done with Live View being active for Canon, but not Nikon.
- Note: the post processing is not done within the CamRanger application.

The screenshot shows the HDR settings interface. At the top are tabs: Data, Focus, Timer, and HDR. The HDR tab is active. Below the tabs, there's a 'Property' dropdown menu set to 'Shutter Speed'. Underneath are two rows of controls. The first row has 'Initial Delay' (00 : 00) and 'Start Value' (1/30). The second row has 'Number of Shots' (3) and 'Stops' (1/3). At the bottom center is a 'Start' button.

## Camera Properties



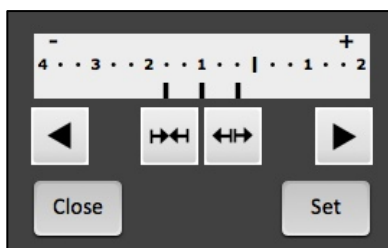
The above diagram indicates the camera properties, which are also listed below, that can be set using the application:

- Auto Exposure Mode
- Aperture
- Metering Mode
- White Balance
- Focus Mode
- Shutter Seed
- ISO
- Capture Mode
- Image Format
- Exposure Compensation and Bracketing

Not all properties can be set for all cameras or in all modes. For example, the diagram above is from a session with a Canon camera and for most Canon's the auto exposure mode and focus mode cannot be set. Disabled properties are indicated with a darker button background.

### Exposure Compensation & Bracketing

Clicking the bracketing button will display the following control:

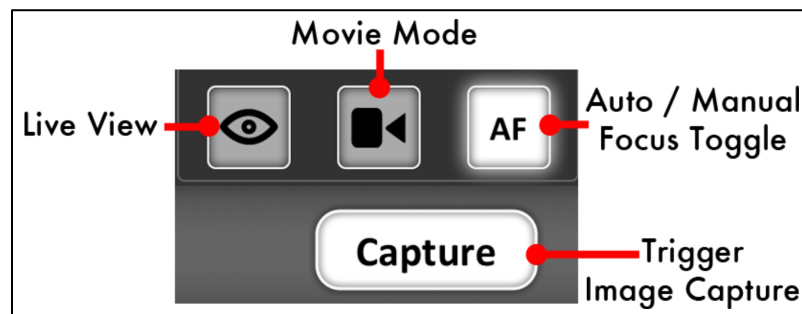


Clicking the exterior arrows pointing to the left and right will adjust the exposure compensation. Holding down the arrow will move the exposure compensation to its respective limit. The two buttons at the middle control the bracketing amount. Clicking the

arrows pointing in will reduce the bracketing amount, while pressing the arrows point outward will increase the bracketing amount.

The bracketing is not set until the “Set” button is pressed. The “Close” button will dismiss the dialog. Pressing “Close” without pressing “Set” will effectively cancel any adjustments made.

## Camera Actions



### Capture

- The “Capture” button initiates the camera trigger. The exact camera behavior is dependent on the camera and camera properties, most importantly the capture mode.
- For most capture modes, such as single, timer, or quiet, the button performs the image capture as expected. It should be noted that for some cameras, advanced modes such as remote or timer will behave as single capture mode.
- Continuous capture mode differs between Nikon and Canon.
  - Nikon: After selecting a continuous drive mode a dialog is displayed allowing the user to select the number of images to capture. When the “Capture” button is pressed, that number of images will be captured.
  - Canon: When in a continuous mode, pressing and holding the “Capture” button behaves in the same way as pushing the physical trigger on the camera.
- It is noted that there can be a very slight lag between the pressing of the “Capture” button and the image capture. The delay can be more pronounced while live view is active. For time critical applications, a remote trigger, such as an RF trigger, can be used in combination with the CamRanger.

### Auto / Manual Focus Toggle

- The AF/MF Focus toggle button allows the user to change the focusing between auto and manual without having to physically adjust the camera.
- This AF/MF adjustment is not possible for all cameras in all modes. For example, some Nikon cameras are required to be connected in “PC” mode, which is accessible by selecting “Connection” on the Mac CamRanger menu bar followed by clicking “PC”.

- After any touch or incremental focusing while in live view, the focus mode will automatically attempt to switch to manual focus such that the user specified focus is not overridden by auto focus upon capture.

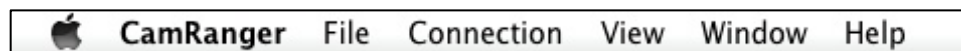
### **Live View**

- The “Live View” toggle button is used to turn live view on and off.
- When live view is on, the main image view is updated with live view images as well as updating the RGB histogram in the Data tab, if the live view histogram is turned on.
- Note: running live view is relatively intensive and there may be slight performance lags in other areas.

### **Movie Mode**

- The “Movie Mode” toggle button is used to turn live view on and off, but within movie mode (only for supported cameras).
- When movie mode is on, the main image view is updated with the live images.
- The “Capture” button changes to “Record” and pressing the “Record” button will start and then stop the recording of a movie.
- Note: movies cannot be downloaded to the Mac using the CamRanger.

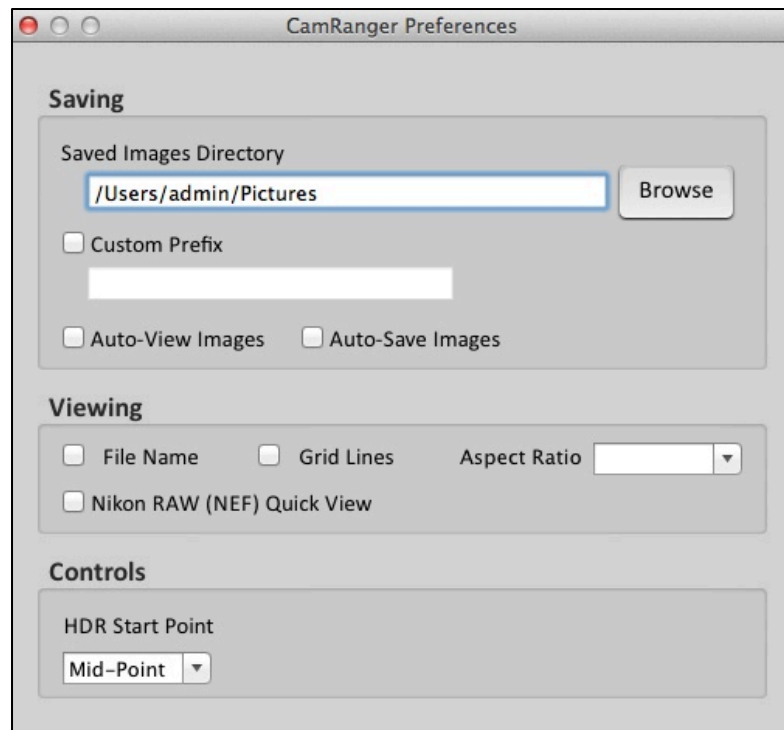
## **Mac CamRanger Menu Bar**



The CamRanger menu bar located at the top of the Mac display contains many useful functions allowing the user to manage the connection, set options and controls, access to the camera’s card contents, and get help.

## CamRanger: Preferences

The CamRanger preferences are useful for saving, viewing, and HDR options. The preferences are accessible by clicking “CamRanger” on the Mac menu bar and then selecting “CamRanger Preferences” on the dropdown.



### *Saving*

- **Saved Image Directory:** As images are captured they can be saved into a specified directory. If pictures from the camera’s memory card are downloaded to the Mac they will be stored in this folder. It is noted all images are stored on the camera’s memory card.
- **Custom Prefix:** This will give the images taken during the session a unique title preceding the image number when saved to the card.
- **Auto-View Images:** This feature will automatically display images as they taken. Pictures will display regardless of whether they are captured from the Mac or the camera.
- **Auto-Save Images:** When this feature is selected, the images will automatically be saved to the directory during the CamRanger session regardless if the images are captured from the Mac or the camera.

### *Viewing*

- **Name:** Displays the images file name at the bottom left of each image
- **Grid Lines:** Overlay a 3x3 grid over the main image view



- Aspect Ratio: Overlays red lines over the main image view to give the user visual feedback on common cropping ratios. Note: this information is not saved with the image.
- Nikon RAW (NEF) Quick View: The NEF files will be viewed as a compressed JPG image

### Controls

- HDR Start Value: Specifies where the selected HDR property value is within the bracket, at the most exposed point (Highlights), least exposed point (Shadows) or in the middle (Mid-Point).

## File: Saving Options

The “Save” and “Save as” options are beneficial for users who do not want all images captured to be saved onto the Mac.

- Save: The image displayed on the main viewing screen can be saved to the default directory by selecting “File” on the Mac CamRanger menu bar followed by “Save.”
- Save as: The image displayed on the main viewing screen can be saved to any directory and any name by selecting “File” on the Mac CamRanger menu bar followed by “Save.”
- To auto-save images as they are captured, refer to the *Mac CamRanger Menu Bar-Preferences section found on page 15.*

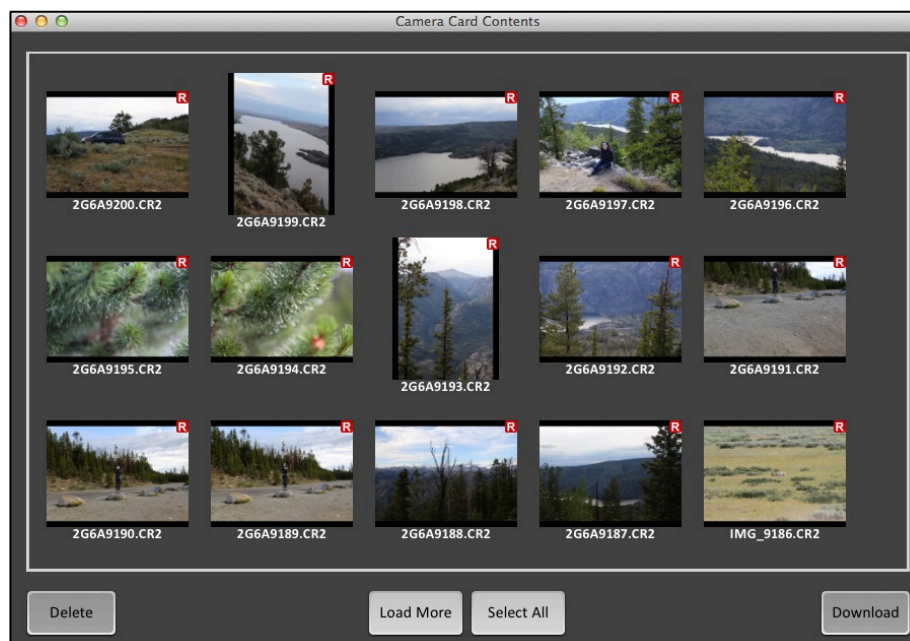
## Connection

- CamRanger Connection: A state dependent “Connect” or “Disconnect” button is available to the user as a troubleshooting option to avoid closing the application in the case of connection problems.
- Nikon Connection Mode
  - After selecting “Connection” on the Mac CamRanger menu bar, the options of “PC” and “Camera” are in the dropdown.
    - PC: PC mode allows more control over properties within CamRanger; however, any properties changed are not maintained, and changing settings on the physical camera are not recognized. Additionally, images cannot be physically triggered from the camera.
    - Camera: Allows the camera to be physically used as normal; however, not all properties will be enabled within CamRanger. The CamRanger application must be set to Camera mode to allow physically triggering from the camera.
    - It should also be noted that the connection mode can not be changed while live view is active.

## View

The view drop down provides access to the camera's card contents and options for control accessibility for the Mac application display

### Card Contents



To view the card contents select "View" on the Mac CamRanger menu bar and then "Card Contents." By doing this a new window will pop-up, as seen above. The card contents will display thumbnails of the images on the camera's removable media. The application will initially load the most recent thumbnails. To load more thumbnails, press the "More" button at the bottom of the window. As seen in the picture above, a small red "R" icon on the upper right of the thumbnail indicates that it is a RAW image. A small green "T" indicates TIFF, while no icon is used to indicate JPG formatted images.

Any number of thumbnails can be selected by pressing a thumbnail, or all may be selected by pressing "Select All" at the bottom of the window. Selected thumbnails will have a yellow border around them. After selecting thumbnails they may either be deleted or saved. The "Delete" button at the lower left will first prompt the user to confirm, and then delete the associated images of the selected thumbnails from the camera's removable media. The "Save" button at the lower right will save all associated images of the selected thumbnails to the image directory specified in the preferences. Images are saved regardless of format.

Images within the card contents view can be viewed by double clicking on the image. The image will then appear in the main image view window.

Note that the thumbnails are presented in chronological order beginning with the most recent. However, for Nikon they are grouped first by format, such that all JPG's will be listed, then TIFF's, and finally RAW images.

### **Controls**

When the “Control” function is turned on, the camera settings and image capturing can be controlled on the Mac since the advanced controls tab, camera properties, and camera actions are accessible on the right hand side of the application. Thumbnails of the images captured within the CamRanger session will appear on the upper portion of the screen, the main image view will show live view or captured images.

When the control function is turned off, the advanced controls tab, camera properties, and camera actions will not appear on the application screen, while the thumbnails of images taken within the CamRanger session will appear on the upper portion of the screen and the main image view will display the captured images. The camera settings and image capturing can be controlled from the camera and are not controlled on the Mac application.

### **Image Only**

When “Image Only” is selected, the advanced controls tab, camera properties, and camera actions on the right hand side of the application are not. The thumbnails of images taken within the CamRanger session will not appear on the upper portion of the screen.

When “Image Only” is not selected, the advanced controls tab, camera properties, camera actions, and thumbnails are accessible on the CamRanger application.

## **Window**

The “Window” dropdown found on the Mac CamRanger menu bar allows the user to minimize and zoom the screen, bring the CamRanger windows to front, and access the camera card contents.

## **Help**

The “Help” dropdown found on the Mac CamRanger menu bar is useful for registering CamRanger units and to access this help manual.

- Registration: By clicking “Register” the user can register a CamRanger. The user must be connected to the Internet to complete the registration.
- CamRanger Help: Click “CamRanger Help” to view this document.

# Incorporation with Lightroom or Aperture

While one cannot control the CamRanger from within Lightroom or Aperture, one can specify a folder to automatically download images to, for saving options refer to the *Mac CamRanger Menu Bar- Preferences section found on page 15*. This folder can be set to as a “watch” folder within Lightroom or Aperture and set to be automatically imported.

## Tips & Troubleshooting

Below are some tips and troubleshooting for common questions or issues arranged by category:

### Registration

- If the CamRanger Mac application is re-installed, the Mac may require the CamRanger to be re-registered.
- Most registration issues are due to not having Internet connectivity or entering the serial number incorrectly.
- If you still have issues, please email [support@CamRanger.com](mailto:support@CamRanger.com) for assistance.

### Connection

- Make sure the CamRanger is fully powered on and initialized (it should take approximately 30 seconds). The power light and WiFi light should both be on.
- The password to connect to the CamRanger WiFi is the CamRanger serial number in all CAPS. If there are still issues connecting, turning the WiFi off on the Mac may help.
- If the CamRanger application is connected to the CamRanger device, but no camera is connected, it will attempt to connect to a camera approximately every 5 seconds.
- If the Mac is outside of or near the edge of the range of the CamRanger hardware there will be connection problems.
- Disconnect and reconnect the CamRanger by selecting “Connection” on the Mac CamRanger menu bar then “Connect” to force a new session/connection.
- Power cycling the camera and CamRanger as well as restarting the application will completely refresh the connection.
- When the camera battery begins to get low, certain commands may start to fail or a connection may be refused.
- The CamRanger hardware can only be connected to a single Mac at a time.
- A second network connection, such as with an Ethernet cable, will likely cause connection failures.
- If there is an inconsistent or intermittent connection, the issue is likely related to the USB connection. A different USB cable will often fix the problem.

## Speed

- The CamRanger has all the same distance and interference limitations as normal WiFi. Long distances and solid objects will slow the connection speed.
- The CamRanger application can handle very large image files. However, waiting for those files to transfer from the camera and then over WiFi can be time consuming. A common operating mode is to shoot RAW along with a small or medium sized JPG.
- Newer and faster Mac computers do perform better overall, particularly for intensive tasks such as showing the 100% resolution images.

## Commands

- Depending on the camera and the mode, capture can fail if the camera fails to acquire focus.
- Intervalometer and Bulb commands are stored on the CamRanger hardware such that the Mac does not need to remain on and connected.
- When an operation, command, or setting is not available or not working the issue is often related to the camera setup. For example:
  - Toggling to AF is disabled if the camera lens switch is set to MF.
  - Live view will fail on Canon cameras if Live View Shooting is disabled in the camera's menu.
  - Capture fails because the removable media on the camera is full.
- For Canon cameras, the Live View focus mode within the camera's menu must be set to "Live View".
- Adjusting or viewing the number of bracketing shots is not currently supported. The display assumes three shots. However, if the number of shots is actually 2, 5, 7, 9, etc. the bracket amount is still correct it will just incorrectly display 3 shots.
- Some features are simply not supported by some cameras. For example continuous capture mode is not supported on the Canon 40D and many Nikons do not support bulb shots. See the camera capability matrix at [www.CamRanger.com](http://www.CamRanger.com) for more detailed information.
- There is no way to cancel an Intervalometer or Bulb command. The only way to stop it is to power off the CamRanger device.

## Images

- The thumbnails are not downloaded until after the image has been recorded to the camera's card. On most cameras this is relatively quick. However, depending on the camera, speed of removable media and number of shots taken in succession, there can be a lag.
- CamRanger can be used to view and download pictures captured through other means. So a photographer could be capturing images, or a RF or light trigger could capture images and the CamRanger application would automatically download the thumbnails.